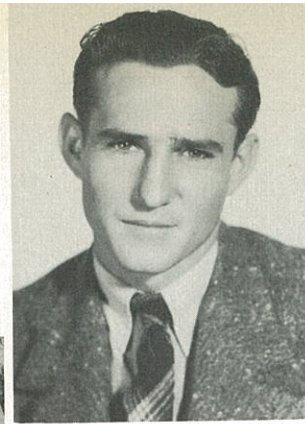


BOB NEELEY
Football '39, '40, '41;
Camera Club '42; "K"
Club.



JUNIOR MCKEE
Football '39, '40,
'41; "K" Club; Pres.
Swing & Turn Club;
Yellow Jacket Reporter
'42; Basketball
'41.



JIMMY MYERS
Swing & Turn '42;
Football '39, '40;
Basketball '39,
'40.



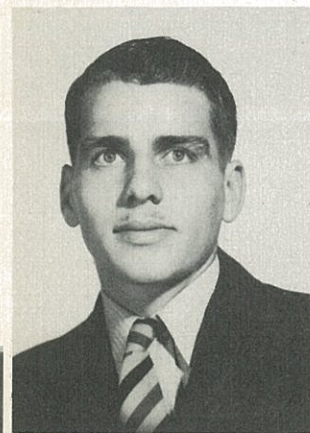
LILLY NOUFAL
Glee Club '39; Pep
Squad '39; Homemak-
ing Club '42; Vol-
ley Ball Team '42.



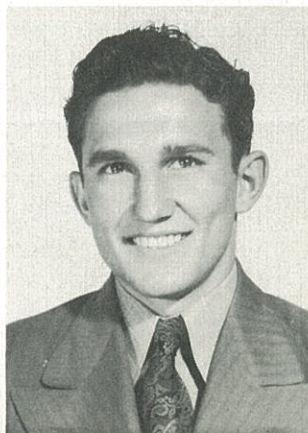
BOBBY DODSON
Most Popular Boy
'42; Tennis Club
'42; Football.



CHARLES McIVER
Football '40, '41;
Sports Editor Sand-
storm '42; Sports
Editor Yellow Jack-
et '41; Basketball
'40, '41, '42; Track
'42.



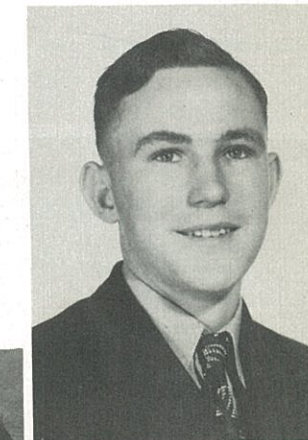
DOUGLAS MAYS
Football '39, '40,
'41; "K" Band '39,
'40, '41; Sr. Senator
'42; Swing & Turn
Club '42; Yellow
Jacket Staff '42.



RAYMOND MYERS
Football '39, '40,
'41; Vice Pres. Jr.
Class; Sr. Rep.
'42; Swing & Turn
Club '42; Basket-
ball '41; Track '41.



PEGGY OLSEN
"K" Band '39, '40,
'41, '42; Glee Club
'41, '42; Publication
Club '42; "K" Band
Librarian '42.



MARVIN PARKER
Swing & Turn Club
'42; Football '40,
'41; Basket Ball
'42; Track '42.